

# PRO-MIC

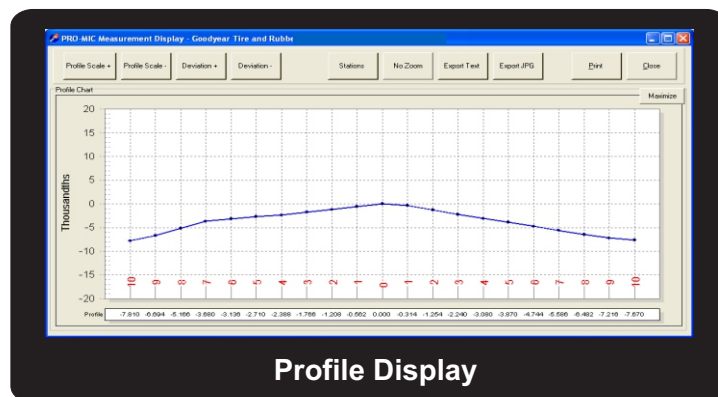
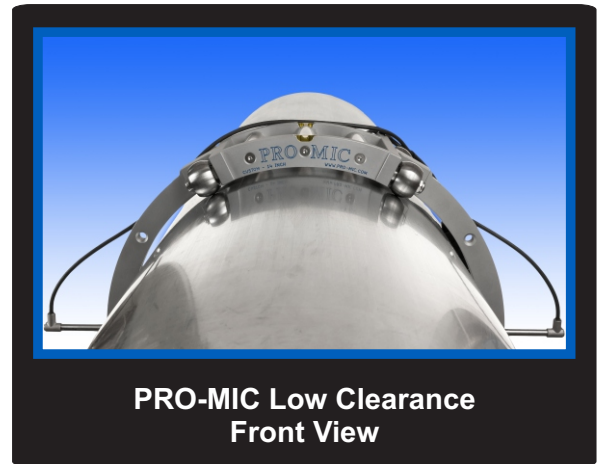
## PRO-MIC Roll Measurement Systems

*Reliability, Repeatability and 3 Button Operation*

### PRO-MIC Low Clearance Roll Profiling System For Calender Rolls and other Low Clearance Rolls

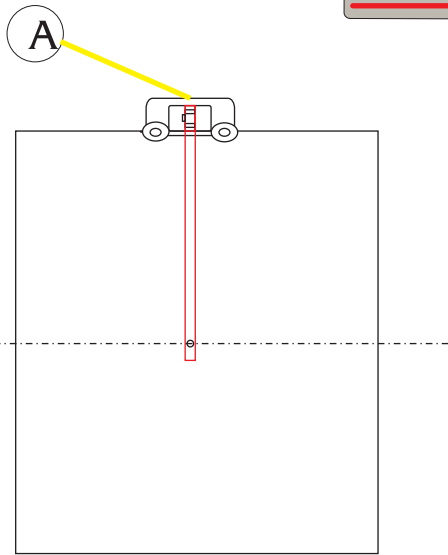
#### PRO-MIC Low Clearance Systems

- Measure Continuous Roll Profiles of difficult to access rolls. Including Calenders, Processing Lines and Mill Roll Assemblies.
- Frame Clearance requirements are as low as 35mm/1.378"
- Uses a special Opposed Probe version of the tried and proven PRO-MIC Digital electronics package in use in more than 950 locations worldwide.
- Standard Measurement Resolution is 0.000020"/0.0005mm; Optional Resolution: 0.000005"/0.000125mm)
- Guaranteed Repeatability of +/-0.0001"/0.0025mm
- Bluetooth Wireless Data Transfer to PC running PRO-MIC Quantum Software. No cables!
- Provides continuous profile measurement (diameter variation) across the roll face. Typical measurements begin and end two inches (50mm) from each roll end.
- PRO-MIC Quantum Software provides target shape comparisons to judge roll grinding accuracy. As well as raw data access for your in house analysis.
- PRO-MIC Quantum Software can be pre-installed in a Netbook PC for instant feedback display of your roll profiles.
- The system presents the measurement data in a continuous profile or optionally at three inch increments across the roll face.
- System Layout Shown on Reverse.

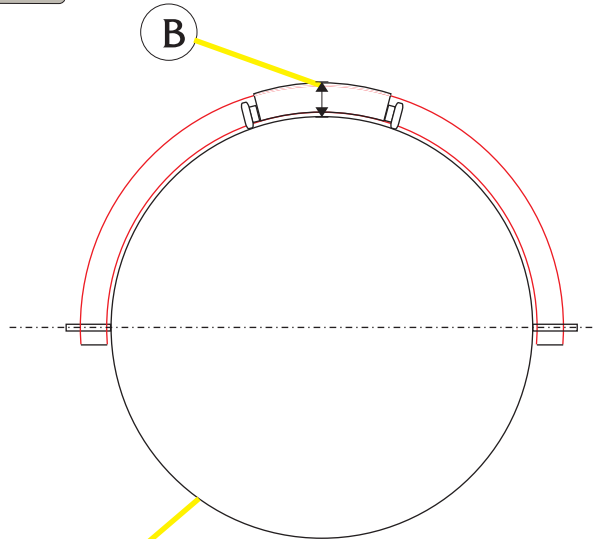


PRO-MIC Corporation . 20135 Valley Forge Circle . King of Prussia, PA 19406

Phone: 610/783-7901 . WWW.PRO-MIC.COM . 1-800-PRO-MIC-1 . Fax: 610/783-7904

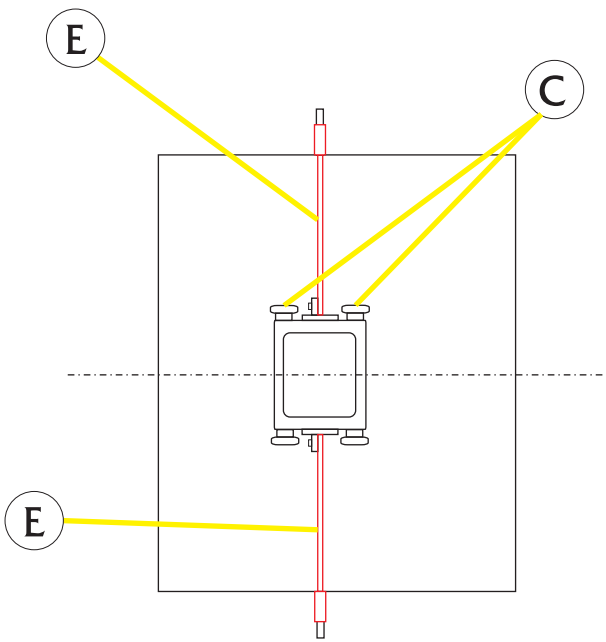


Front View



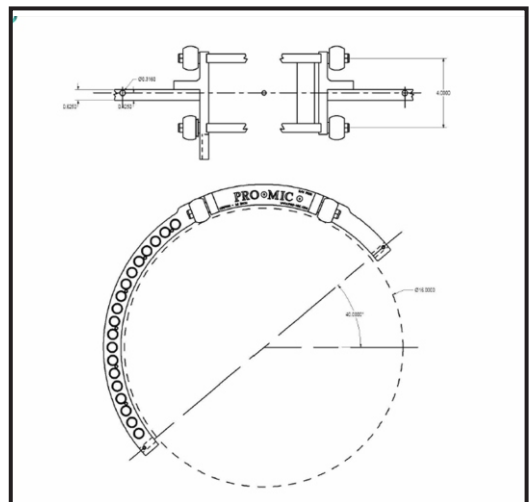
24" OD Roll

End View



Top View

**OPTIONAL OFFSET-ARM VERSION AVAILABLE**



**Notes:**

- A. Non Pivoting, Opposed Probe Design. Using PRO-MIC Digital Electronics package.
- B. Maximum mechanical assembly clearance from roll is 35mm/1.378" .
- C. 4 inch wheelbase, measures to within 2 inches of each roll end.
- D. Electronics is off-board with rugged 3 wire sheathed connection to frame.
- E. Arm Assemblies are removable with a one bolt/two pin mounting point.